

# THE ROSARY

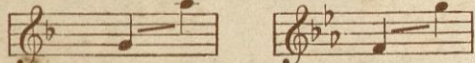
BY  
ETHELBERT NEVIN

WORDS BY  
ROBERT CAMERON ROGERS

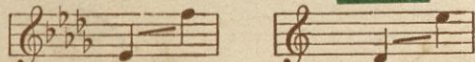
### VOICE EDITIONS

Song with Piano Accompaniment (Six Keys) Net

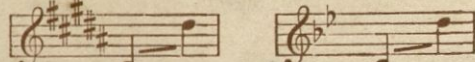
High Sop. or Ten., in F. Sop. or Ten., in E $\flat$ . ea. 2/-



Sop. or Ten., in D $\flat$ . Mez. S. or Bar., in C. ea. 2/-



Mez. Sop. or Bar., in B. Alto or Bass, in B $\flat$ . ea. 2/-



- Edition with English words (6 Keys)
- Edition with French & English words (F, D $\flat$ , C, B $\flat$ )
- Edition with German & English words (E $\flat$ , D $\flat$ , C, B $\flat$ )
- Edition with Italian & English words
- Edition with Spanish & English words (6 Keys)
- Edition with Danish & English words (D $\flat$ )
- Edition with Russian & English words (D $\flat$ )
- Edition with Esperanto & English words (D $\flat$ )
- Duet for Sop. and Alto, in E $\flat$  2/-
- Duet for Sop. and Ten., in E $\flat$  2/-
- Duet for Mez. Sop. and Bar., in C 2/-
- Quartet for Mixed Voices 8d.
- Quartet for Mixed Voices (Sop. or Ten. Solo) 8d.
- Quartet for Men's Voices 8d.
- Quartet for Men's Voices (Sop. or Ten. Solo) 8d.
- Quartet for Women's Voices 8d.

### INSTRUMENTAL ARRANGEMENTS

- |  |         |
|--|---------|
| Piano Solo, arr. by B. Whelpley                        | Net 2/- |
| Piano Solo, simplfd. arr. by G. Marschal-Loepke        | 2/-     |
| Organ Solo, arr. by R. Goss-Custard                    | 2/-     |
| Harp (with organ <i>ad lib.</i> ), arr. by A. F. Pinto | 2/6     |
| Violin and Piano, arr. by G. Strube                    | 2/-     |
| Violin and Piano, simplfd. arr. by P. Th. Miersch      | 2/-     |
| Violoncello and Piano                                  | 2/-     |
| Violin, 'Cello and Piano, arr. by H. Riesenfeld        | 2/6     |
| Cornet and Piano, arr. by H. G. Blaisdell              | 2/-     |
| Orchestra (Cornet Solo), arr. by G. Strube             | 4/-     |
| Orchestration (E $\flat$ , D $\flat$ , or B $\flat$ )  | 4/-     |
| Military Band (Cornet Solo)                            | 4/-     |
| Ukulele, arr. by C. S. De Lano                         | 2/-     |
| Steel Guitar, arr. by C. S. De Lano                    | 2/-     |
| Mandolin and Piano                                     | 2/-     |
| 2 Mandolins and Piano                                  | 2/6     |
| Mandolin and Guitar                                    | 2/-     |
| 2 Mandolins and Guitar                                 | 2/-     |
| Mandolin Orchestra, arr. by H. F. Odell                |         |
| 1st Mandolin   | 1/6     |
| 2nd Mandolin   | 1/-     |
| 3rd Mandolin   | 1/-     |
| Tenor-Mandola  | 1/-     |
| Mando-Cello  | 1/-     |
| Mando-Bass   | 1/-     |
| Banjo Obbligato  | 1/-     |
| Guitar Accompaniment                                   | 1/-     |
| Piano Accompaniment                                    | 2/-     |
| Flute  | 1/-     |
| Violoncello  | 1/-     |



THE BOSTON MUSIC COMPANY : BOSTON : MASSACHUSETTS

LONDON:  
G. SCHIRMER, Ltd., 18, Berners St., W.

SYDNEY:  
PALING & Co., Ltd., 338, George St.

# A NEW SERIES OF ATTRACTIVE SALON PIECES BY CHARLES HUERTER

Published by

## THE BOSTON MUSIC COMPANY Boston, Mass., U. S. A.

Copies may be had at any music shop, or from

G. SCHIRMER, LTD.  
18 Berners St., London, W.

PALING & CO., LTD.  
338 George St., Sydney, Australia

Price 2/- net

### TOLD AT TWILIGHT

Charles Huarter

Moderato cantabile  
*dolce*  
Piano *p* melodia marcato *p* *rit.* *a tempo* *ten.*

Musical score for 'Told at Twilight' in G major, 2/4 time. The score consists of two staves: a treble staff with a melody and a bass staff with accompaniment. The tempo is Moderato cantabile, and the mood is dolce. The piece ends with a tenuto (ten.) marking.

Copyright, 1913, by The Boston Music Co.

### BERCEUSE

Charles Huarter

Price 2/- net

Andante cantabile  
*p dolce*  
Piano *p* *col Pedale* *rit.* *a tempo* *rit.*

Musical score for 'Berceuse' in G major, 3/4 time. The score consists of two staves: a treble staff with a melody and a bass staff with accompaniment. The tempo is Andante cantabile, and the mood is p dolce. The piece includes a col pedale marking and ends with a ritardando (rit.) marking.

Copyright, 1914, by The Boston Music Co.

### CAPRICE

Charles Huarter

Price 2/- net

Vivace  
*mf* *rubato* *rit.* *a tempo* *leggiere* *poco accel.* *poco rall.* *veloce*  
Piano *con Pedale*

Musical score for 'Caprice' in G major, 2/4 time. The score consists of two staves: a treble staff with a melody and a bass staff with accompaniment. The tempo is Vivace, and the mood is mf rubato. The piece includes various tempo markings (rit., a tempo, poco accel., poco rall., veloce) and a con pedale marking.

Copyright, 1913, by The Boston Music Co.

### SCÈNE DE BALLET

Charles Huarter

Price 2/- net

Allegretto rubato  
*pp* *p* *leggiere* *a tempo* *cresc.*  
Piano *con Pedale*

Musical score for 'Scene de Ballet' in G major, 3/4 time. The score consists of two staves: a treble staff with a melody and a bass staff with accompaniment. The tempo is Allegretto rubato, and the mood is pp. The piece includes a con pedale marking and ends with a crescendo (cresc.) marking.

Copyright, 1914, by The Boston Music Co.

### YESTERDAYS

Charles Huarter

Price 2/- net

Andante cantabile *ten.*  
*molto espressivo* *p* *rit.* *ten.* *a tempo* *poco accel.*  
Piano *col Pedale*

Musical score for 'Yesterdays' in G major, 6/8 time. The score consists of two staves: a treble staff with a melody and a bass staff with accompaniment. The tempo is Andante cantabile, and the mood is molto espressivo. The piece includes a con pedale marking and various tempo markings (rit., ten., a tempo, poco accel.).

Copyright, 1914, by The Boston Music Co.

### IN THE LAND OF SUNSHINE

Charles Huarter

Price 2/- net

Allegretto grazioso ( $\text{♩} = 76$ )  
*p* *cresc.* *rit.* *a tempo* *mf*  
Piano *col Pedale*

Musical score for 'In the Land of Sunshine' in G major, 2/4 time. The score consists of two staves: a treble staff with a melody and a bass staff with accompaniment. The tempo is Allegretto grazioso, and the mood is p. The piece includes a con pedale marking and various tempo markings (cresc., rit., a tempo, mf).

Copyright, 1915, by The Boston Music Co.

A pamphlet containing thematic pages of all compositions by Charles Huarter, including songs, works for piano solo, violin and piano, violoncello and piano, and orchestra, together with portrait and biographical sketch of the composer, will be sent gratis upon application.

# THE ROSARY

ROBERT CAMERON ROGERS

ETHELBERT NEVIN



VOICE *Lento ed intimo*  
 The hours I spent with thee, dear heart,

PIANO *p*

Are as a string of pearls to me; I count them o-ver ev-'ry

one a-part, My ro-sa-ry, my ro-sa-ry!

*poco rall.*

*dolce*

L. H.

Copyright, 1898, by G. Schirmer, Jr.

For all countries

Depositado conforme a la ley de Republica Mexicana en el año 1912 por The Boston Music Company

B. M. Co. 2701

*a tempo*  
*mp*

Each hour a pearl, each pearl a pray'r To still a heart in ab-sence

*a tempo*  
*mp*

*ped.* *ped.* \*

*molto largamente*

wrung: I tell each bead un - to the end, And there a

*molto largamente*  
*dolce*

*ped.* *ped.* \* *ped.* \*

*a tempo*  
*p*

cross is hung! O mem - o - ries that bless and

*a tempo*  
*p* quasi arpeggio vibrato

*ped.* \* *ped.* \* *ped.* *dolcissimo* \*

burn! O bar-ren gain and bit-ter loss!

*patetico*

*mf sempre cresc.* I kiss each bead, and strive at last to learn To kiss the

*mf sempre cresc.* *f*

*f poco accel.* *ff* *Largo pp* cross, sweet-heart! to kiss the cross.

*poco accel.* *ff* *pp*

THE LIFE OF ETHELBERT NEVIN by Vance Thompson, richly illustrated, with posthumous compositions appended, handsomely bound n. 10/6  
B. M. Co. 2701

# NEW SONGS THAT VIE IN POPULARITY WITH NEVIN'S "ROSARY"

Published by **THE BOSTON MUSIC COMPANY** Boston, Mass., U. S. A

Complete copies may be had at any music shop, or from

**G. SCHIRMER, LTD.**

18 Berners St., London, England

**PALING & CO., LTD.**

338 George St., Sydney, Australia

## A Memory

Ella Moore Grieve

*Lento moderato ed espressivo*

2/- net High, D<sup>b</sup>  
Med., B<sup>b</sup>  
Low, A<sup>b</sup>

Voice: Dear bunch of ros - es, Once so fresh and fra - grant, Now you are dead, Your beau - ty fad - ed, too,

Piano: *mp* *p*

Copyright, 1915, by The Boston Music Co., For all countries

## Path o' Dreams

Charles Huerter

*Allegretto*

2/- net

Voice: I would I knew a lit - tle path, A - down a meadow'd way, Deep set in banks o' dai - sies bright, Ere fades the glo - ried day, And

Piano: *p*

Copyright, 1914, by The Boston Music Co., For all countries

## Song for June

Wm Spencer Johnson

*Andante con moto* *p*

2/- net High, G  
Low, D

Voice: The brood - ing eve, and the song for sing - ing Un - der the smile of an am - ber moon, O'er emp - ty fields the whip - poor - will

Piano: *pp* *sempre arpeggiato*

wing - ing, And these are the twi - light charms of June! Ah, ah,

Piano: *pp*

Copyright, 1912, by G. Schirmer, Boston, For all countries

## Bliss

C. Finucane Draper

*Moderato*

2/- net

Voice: There's a ram - shack - le cot - tage in Tum - ble - down Street, Where ro - ses and clem - a - tis climb, There's a bro - ken - in door, and a hole in the floor, And the clocks nev - er keep the right time.

Piano: *mf*

Copyright, 1914, by The Boston Music Co., For all countries

## Ah! Let Me Dream

Arthur Melvin Taylor

*Slowly, tenderly* *mp*

2/- net High, A<sup>b</sup>  
Med., F  
Low, D

Voice: Last night I dream'd of thee, love, A dream so sweet and dear, I dream'd I held thee close, love, I dream'd thou wert so near.

Piano: *mp* *mf*

Copyright, 1907, by G. Schirmer, Jr., For all countries

CVI

American Song Composers are pre-eminently represented in *The Boston Music Company Catalog*. Selections of material in this field, for special programs, etc., will be sent for examination upon request. We recommend the *B. M. Co. Album of Songs* by American composers, (n. 3/-) containing 12 songs, all of them recognized successes.

# MELODIOUS AND EFFECTIVE SALON PIECES BY CHARLES HUERTER

Published by

**THE BOSTON MUSIC COMPANY** Boston, Mass., U. S. A.

Copies may be had at any music shop, or from

**G. SCHIRMER, LTD.**  
18 Berners St., London, W.

**PALING & CO., LTD.**  
338 George St., Sydney, Australia

Price 2/- net  
Moderato rubato

**In Spring-time**  
Au Printemps

Charles Huarter  
*poco rall.*

The score for 'In Spring-time' is in 3/4 time, starting with a mezzo-forte (mf) dynamic. It features a melody in the right hand with various ornaments and a supporting bass line. Performance markings include 'Moderato rubato', 'poco rall.', 'più rit.', and 'a tempo'.

Price 2/- net  
Allegretto grazioso

**In the Starlight**

Charles Huarter

The score for 'In the Starlight' is in 3/4 time, starting with a mezzo-forte (mf) dynamic. It features a melody in the right hand with various ornaments and a supporting bass line. Performance markings include 'Allegretto grazioso', 'col Pedale', and 'rit. a tempo'.

Price 2/- net  
Andante cantabile

**Melodie**

Charles Huarter

The score for 'Melodie' is in 3/4 time, starting with a piano (p) dynamic. It features a melody in the right hand with various ornaments and a supporting bass line. Performance markings include 'Andante cantabile', 'dolce', 'con Pedale', 'ten.', 'rit.', and 'a tempo'.

Price 2/- net  
Allegretto grazioso

**Forget-me-nots**

Charles Huarter

The score for 'Forget-me-nots' is in 3/4 time, starting with a mezzo-forte (mf) dynamic. It features a melody in the right hand with various ornaments and a supporting bass line. Performance markings include 'Allegretto grazioso', 'rit.', 'a tempo', and 'mf'.

Price 2/- net  
Moderato grazioso

**Intermezzo**

Charles Huarter

The score for 'Intermezzo' is in 3/4 time, starting with a piano (p) dynamic. It features a melody in the right hand with various ornaments and a supporting bass line. Performance markings include 'Moderato grazioso', 'p', and 'cresc.'.

Price 2/- net  
Movimento di Valzer (Allegro)

**Valse**

Charles Huarter

The score for 'Valse' is in 3/4 time, starting with a piano (p) dynamic. It features a melody in the right hand with various ornaments and a supporting bass line. Performance markings include 'Movimento di Valzer (Allegro)', 'p', and 'con Pedale'.

The above pieces are all  
Copyright, 1913, by The Boston Music Co.  
For all countries  
C

A pamphlet containing thematic pages of all compositions by Charles Huarter, including songs, works for piano solo, violin and piano, violoncello and piano, and orchestra, together with portrait and biographical sketch of the composer, will be sent gratis upon application.

# THE FOUR MOST POPULAR SONGS BY BENJAMIN WHELPLEY

Price 2/-net each

Published by

## THE BOSTON MUSIC COMPANY Boston, Mass., U. S. A.

Copies may be had at any music shop, or from

G. SCHIRMER, LTD.  
18 Berners St., London, W.

PALING & CO., LTD.  
338 George St., Sydney, Australia

### I know a hill

Harriet Boyer  
(Used by permission)

Benjamin Whelpley

Musical score for 'I know a hill'. It features a voice line and a piano accompaniment. The tempo is marked 'Andante' and 'a tempo'. The lyrics are: 'I know a hill in mine own land where I would be; I know a hearth fire burn-ing bright, that burns for me. A-round that home this win-ter tide the snow lies deep;'. The score includes dynamic markings such as *p*, *mf*, and *p*.

Copyright, 1903, by G. Schirmer, Jr.  
For all countries

B. M. Co. 848

### Phyllis is my only joy

Sir Charles Sedley (High Voice) Benjamin Whelpley (Medium Voice)

Musical score for 'Phyllis is my only joy'. It features a voice line and a piano accompaniment. The tempo is marked 'Allegretto'. The lyrics are: 'Phyl-lis is my on ly joy, Faith-less as the winds or seas; Some-times for-ward some-times coy, Yet she nev-er fails to please; If with a frown,'. The score includes dynamic markings such as *mf*, *p rit.*, and *p*.

Copyright, 1906, by G. Schirmer, Jr.  
For all countries

B. M. Co. 1386

### The nightingale has a lyre of gold

Wm. E. Henley  
(Used by permission)

Benjamin Whelpley

Musical score for 'The nightingale has a lyre of gold'. It features a voice line and a piano accompaniment. The tempo is marked 'Animato (♩ = 80)' and 'a tempo'. The lyrics are: 'The night-in-gale has a lyre of gold. The lark's is a clar i-on call, And the black-bird plays but a box wood flute,'. The score includes dynamic markings such as *f*, *rit.*, *cresc.*, and *p*.

Copyright, 1906, by G. Schirmer, Jr.  
For all countries

B. M. Co. 832

### Oh, for a breath o' the moorlands

Harriet Miller Davidson (High Voice) Benjamin Whelpley (Low Voice)

Musical score for 'Oh, for a breath o' the moorlands'. It features a voice line and a piano accompaniment. The tempo is marked 'Allegretto, con spirito'. The lyrics are: 'Oh, for a breath o' the moor-lands, A whiff o' the cal-ler air; For the smell o' the flow-er-in' heath-er My ver-yheart is sair Oh, for the sound o' the burn-ies That'. The score includes dynamic markings such as *mf*, *dim. e rit.*, *p*, and *dolce*.

Copyright, 1906, by G. Schirmer, Jr.  
For all countries

B. M. Co. 1387

A complete list of all compositions by Benjamin Whelpley, for voice and piano, piano solo, etc., including thematic pages of the composer's most popular songs and piano pieces, together with his portrait and biographical sketch, will be sent gratis upon application.